



ENGINE

Model	: ISUZU-AI-4HK1X
Type	: Water-cooled, 4 cycle, 4 cylinders, line type direct injection, turbocharger, intercooler, electronic diesel engine.
Power	: 162 HP/ 2000 rpm SAE J1349
Max. Torque	: 656 Nm/1500 rpm
Displacement	: 5,193 cc
Bore and Stroke	: 115 mm x 125 mm
This new engine complies with the Emission Regulations U.S. EPA Tier III, and EU Stage III A.	

LOWER STRUCTURE (CHASSIS)

Chassis	: Box shaped, reinforced lower chassis, front and rear outriggers (stabilizers) as standard figures.
Axes	: The pivot pin mounted front axle allows two options : 8° in each direction for best matching conditions, or could be locked at any desired position for perfect stability.
Tires	: 10.00-20 (14pr)

CAB

- Improved operator's all round visibility
- Increased cabin internal space
- Use of six viscomount cabin mountings that dampen the vibrations
- High capacity A/C
- Cooled storage room
- Glass holder, book and object storage pockets
- Pool type floor mat
- Improved operator's comfort through versatile adjustable seat
- Ergonomically redesigned cabin through relocated switch board, and re-styled travel pedals and levers

SWING SYSTEM

Swing Motor	: Axial piston type integrated with shock absorber valves.
Reduction	: 2 stage planetary gear box.
Swing Brakes	: Hydraulic multi disc type.
Swing Speed	: 10.7 rpm

TRAVEL AND BRAKES

Travel	: Fully hydrostatic.
Travel Motors	: Axial piston type.
Reduction	: 2 stage planetary gear.

Travel Speed

High Speed	: 26 km/h
Low Speed	: 8 km/h
Max. Drawbar Pull	: 11,850 kgf
Gradeability	: 30° (%58)
Service Brake	: Independent front/rear style (double circuit) hydraulic power brake system. Pressure engaged/spring released type. Located "on hub" for ideal stability and safety.

HYDRAULIC SYSTEM

Main Pump

Type	: Double variable displacement axial piston pumps.
Max. Flow	: 2 x 234 lt/min
Pilot Pump	: Gear, 19 lt/min

Relief Valves

Attachment (Boom, Arm, Bucket)	: 330 kgf / cm ²
Power Boost	: 360 kgf / cm ²
Travel	: 360 kgf / cm ²
Swing	: 240 kgf / cm ²
Pilot	: 40 kgf / cm ²

Cylinders

Main Boom	: 2 x 125 x 85 x 1,325 mm
Stick Cylinder	: 1 x 140 x 100 x 1,640 mm

Opera Control System

- Easy-to-use control panel and menus
- Improved fuel economy and productivity
- Maximum efficiency by selection of power and work modes
- Overheat prevention and protection system without interrupting the work
- Automatical powerboost switch-on and switch-off
- Automatical electric power-off
- Maintenance information and warning system
- Error mode registry and warning system
- Hidromek Smartlink (Optional)
- Automatic preheating
- Auto-Idle and automatic deceleration system
- Automatic powershift to improve performance
- Selection of multi-language on control panel
- Real time monitoring of operational parameters such as pressure, temperature, engine load
- Anti-theft system with personal code
- Possibility to register 26 different operating hours
- Rear-view, arm-view camera (Optional)

STEERING SYSTEM

The "orbitrol" type steering system controls a steering cylinder located on the front axle. Minimum turning radius is 6900 mm.

CAPACITY

Fuel Tank	: 354 lt	Transmission	: 3 lt
Hydraulic Tank	: 165 lt	Engine Oil	: 18 lt
Hydraulic System	: 305 lt	Radiator	: 22 lt
Swing Reduction	: 5 lt	Front/Rear Axle	: 14/16 lt

ELECTRICAL SYSTEM

Voltage	: 24 V
Battery	: 2 x 12 V x 120 Ah
Alternator	: 24 V / 50 A
Starting Motor	: 5 kw

LUBRICATION

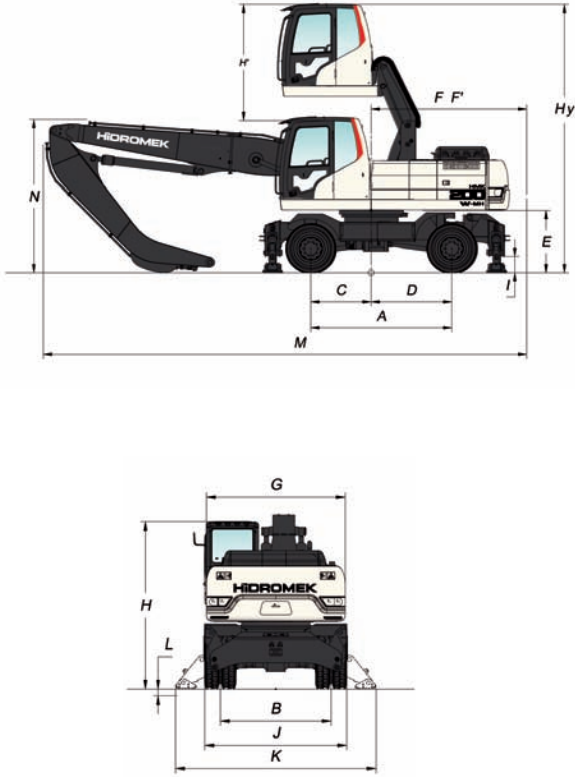
Centralized lubrication system is provided for lubrication all difficult-to-reach parts on the components, such as boom and arm.

OPERATING WEIGHT

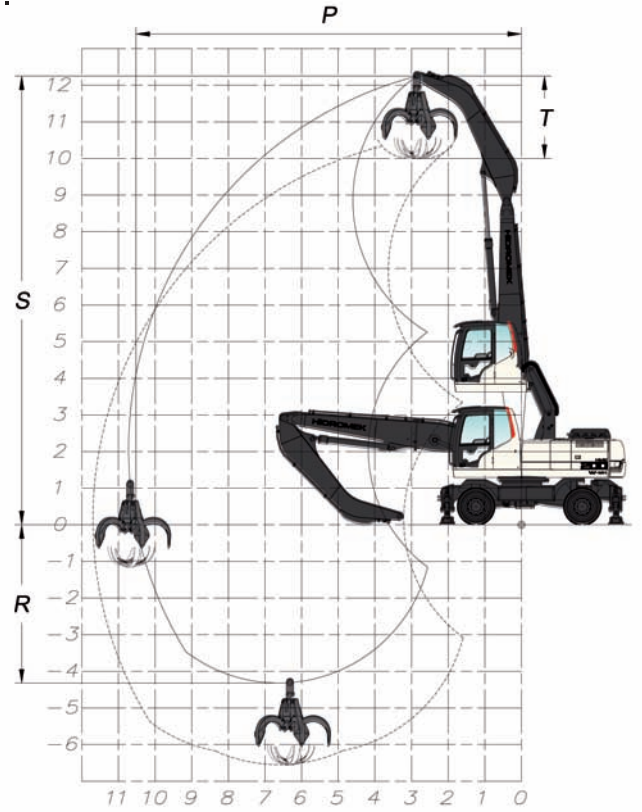
21,900 kg

HMK 200W MH

I.



II.



I. GENERAL DIMENSIONS

Boom Dimension	6,800 mm
Arm Dimension	4,100 mm
A - Axle Distance	2,900 mm
B - Thread	2,124 mm
C - Rotation Axis – Front Axle Distance	1,660 mm
D - Rotation Axis – Rear Axle Distance	1,240 mm
E - Upper Chassis to Ground Clearance	1,290 mm
F - Counterweight Distance	2,780 mm
F' - Counterweight Turning Radius	2,800 mm
G - Upper Frame Width	2,660 mm
H - Cab Height	3,180 mm
H' - Cab Rising Height	2,400 mm
Hy - Total Cab Height	5,580 mm
I - Outrigger Ground Clearance	340 mm
J - Width at Tires	2,720 mm
K - Outrigger Width (Overall)	3,840 mm
L - Outrigger Digging Depth	125 mm
M - Overall Length / Transport	9,940 mm
N - Boom Height / Transport	3,150 mm

II. WORKING DIMENSIONS

Boom Dimension	6,800 mm
Arm Dimension	4,100 mm
O - Maximum Reach Distance	10,720 mm
P - Maximum Reach at Ground Level	10,520 mm
R - Maximum Depth	4,320 mm
S - Maximum Height	12,250 mm
T - Polyp-Grab and Equipment Height	2,230 mm

HIDROMEK®

FACTORY - HEAD OFFICE
 Ayas yolu 25. km 1. Organize Sanayi Bölgesi Osmanlı Caddesi No: 1
 06935 Sincan / ANKARA / TURKEY
 Phone: (+90) 312 267 12 60 • Fax: (+90) 312 267 21 12
 www.hidromek.com • e-mail: export@hidromek.com.tr

Notice:
 Hidromek reserves the right to modify the specifications and design of the model indicated on this brochure without prior notice.