

BRUSH CHIPPER



BC1230A

Powerful Brush- Chipping Action Packs Away Brush

The compact BC1230A brush chipper is designed to handle the rugged demands of heavy-duty commercial applications. Four different engine options ranging from 84 HP to 135 HP (63 kw to 101 kw) offer the power you need to pack away brush on the toughest of jobs. Enjoy powerful brush-chipping action with the slimmed-down Vermeer® BC1230A.



BC1230A Specifications

General

Weight: 5660 lbs. (2567 kg)
Length: 150" (381 cm)
Width: 79" (201 cm)
Height: 98" (249 cm)

Engine Options

Make/Model: Perkins 1004-42 natural
Gross HP: 84 HP (63 kw) @ 2400 RPM
Type of fuel: Diesel
Cylinders: 4
Bore and stroke: 4.055" (10.3 cm), 5" (13 cm)
Displacement: 243 CID (3982 cc)

Make/Model: Perkins 1004-40T
Gross HP: 110 HP (82 kw) @ 2400 RPM
Type of fuel: Diesel
Cylinders: 4
Bore and stroke: 3.937" (10.0 cm), 5" (13 cm)
Displacement: 243 CID (3982 cc)

Make/Model: GM 3.0L L4
Gross HP: 80 HP (60 kw) @ 3000 RPM
Type of fuel: Gas
Cylinders: 4
Bore and stroke: 4" (10 cm), 3.6" (9.1 cm)
Displacement: 181 CID (2966 cc)

Make/Model: GM 4.3L V6
Gross HP: 135 HP (101 kw) @ 3000 RPM
Type of fuel: Gas
Cylinders: 6
Bore and stroke: 4" (10 cm), 3.48" (8.8 cm)
Displacement: 262 CID (4293 cc)

Capacities

Fuel tank: 25 gal. (95 L)
Hydraulic tank: 8.9 gal. (33.7 L)

Cutting System

Disc size: 41.25" dia. x 1.5" width (104.8 cm x 3.8 cm)
Speed: 905 RPM
Knives: Four .375" x 3.5" x 8" (1.0 cm x 8.9 cm x 20 cm)
Bedknife: 4-edge .75" x 6" x 11.88" A8 steel
(1.9 cm x 15 cm x 30.2 cm)

Feed/Discharge System

Infeed opening: 12" x 12" (30 cm x 30 cm)
Feed-table length: 68.5" (174.0 cm)
Feed-table height: 24" (61 cm)
Feed-roller style: Two 16.5" (41.9 cm) dia. vertical
Infeed rate: 0 fpm – 143 fpm (0 m/min. – 44 m/min.)

Chassis

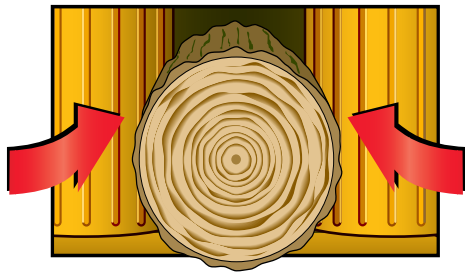
Frame: 6" (15 cm) channel C6 x 8.2" (20.8 cm)
Tires: LT 215/85 R16
Axle/Suspension: 6000 lb. (2722 kg) torsion axle

Electrical

System voltage: 12-volt
Lights: Turning, license, brake, side marker



Feed tables help keep operators safer by positioning them farther from the cutting action. Designed for safety, Vermeer feed tables are nearly twice the length of some competitive units. A unique, dual vertical feed-roller design prevents the sudden uplifting of logs toward the operator.



The AutoFeed II® system automatically monitors and regulates feeding to help you increase productivity and, at the same time, decrease engine stress. This patented feature allows the operator to load the brush and walk away while the AutoFeed II system does the work.

Vermeer



Vermeer Manufacturing Company

1210 Vermeer Road East
P.O. Box 200
Pella, Iowa 50219 U.S.A.
Phone: (641) 628-3141
Fax: (641) 621-7734

Europe, Middle East and Africa Inquiries:

Vermeer International
P.O. Box 323
4460 AS Goes, Netherlands
Phone: +31 113 272700
Fax: +31 113 272727

For more information, call:

1-888-VERMEER
1-888-837-6337 (U.S.A. only)
International fax: +1 (641) 621-7730
www.vermeer.com

Vermeer Manufacturing reserves the right to make changes in engineering, design and specifications; add improvements; or discontinue manufacture at any time without notice or obligation.

VERMEER, VERMEER LOGO and AUTOFEED II are registered trademarks of Vermeer Manufacturing Company in the U.S. and/or other countries. PERKINS is a registered trademark of Varsity Europe Ltd.
© 2002 Vermeer Manufacturing Company.